



medmont meridia™ Specifications

Size

Weight

10kg

Height

470mm Width: 235mm Depth: 345mm

Shipping Dimensions and Weight

416mm x 416mm x 660mm, 15 kg

Performance

Coverage

Standard: 0.25 -11mm; TCC (Composite): Limbus to Limbus

Field of View

Topography: 17.5 mm(H); Fluorescein: 20.0 mm(H);
Anterior Image: 26.0 mm(H); Meibomian Image: 26.0 mm(H)

Repeatability

0.1 Diopters

Power Range

10 – 100 Diopters

Number of Rings

32

Electrical

Rated Supply Voltage

100-240 VAC, 50/60 Hz

Rated Input

0.19 amps MAX

Isolation Transformer Requirements

Medical Grade, compliant with IEC 60601-1 Min. 500W, Min. 4x IEC C13 Outlets, specified for use at national mains voltage

Minimum Computer Requirements

PC and Mains Powered Peripherals

IEC60950 or IEC 62368-1 Compliant

PC Requirements

OS Microsoft™ Windows™ 10 Pro 64 bit edition,
version 1909 or later.

Processor Intel i5 generation 6 processor or later.

Motherboard Genuine Intel™ chipset highly recommended.

Memory 8 GB for non-video captures, 16 GB for video captures.

Hard Disk Space: 40 GB for non-video captures, 200 GB for video captures (more for larger databases or busy practices). Video cards that share main memory are not recommended.

Screen resolution Recommended 1920 x 1080. Minimum supported 1280 x 720.

USB At least one free USB 3.1 generation 1 compliant port of the PC.

Note: The specifications are subject to change without notification.



Empowering Healthy Sight



advantages ▶ simple & rewarding

FEATURES:

medmont meridia™ | Classic & Professional

- 16mm field of view, limbus-to-limbus color topography
- Optimized depth of field focus
- High resolution digital color imaging
- Horizontal visible iris diameter measurement
- Corneal and scleral lens simulation
- Ergonomic quick keys on instrument
- Convenient and secure calibration ball storage

ADDITIONAL FEATURES:

medmont meridia™ | Professional

- Anterior imaging and video
- Meibomian gland imaging
- Fluorescein imaging and video
- Tear meniscus height measurements
- Pupil measurements
- 2-10x digital zoom function
- Dry eye patient screening reports
- Proven imaging grading scales (EFRON, BHVI, Meiboscale)



MEDMONT INTERNATIONAL PTY LTD
Unit 5, 56 Norcal Road, Nunawading, Victoria 3131 Australia
Tel: (03) 9259 0800

YOUR LOCAL MEDMONT DISTRIBUTOR

www.medmont.com

info@medmont.com



PN003235-DOC67-v1.1

medmont meridia™
Advanced Topographer

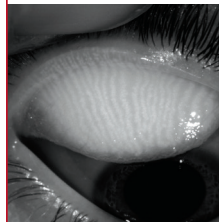


Collaborative Views and Insightful Patient Reports

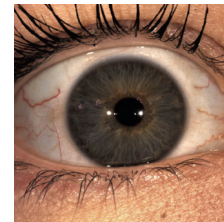
The **medmont meridia™** Advanced Topographer is designed to improve patient outcomes and grow your practice with new multi-purpose clinical evaluation options to fit your needs. This state-of-the-art technology is available as a choice of two models - Classic and Professional.

Built from the proprietary concepts of the E300, the Classic model offers the same proven best-in-class topography, enhanced with a larger color field-of-view and ergonomic quick keys for navigating the software. The Professional model extends the features of the Classic with anterior, fluorescein, and meibomian gland imaging and videos. The Professional model also features a choice of proven dry eye grading scales and reports. This evidence-based approach with collaborative views and insightful patient reports facilitates patient communication and engagement.

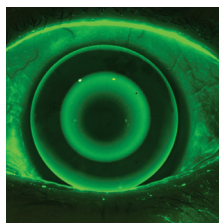
Clear Meibography Imaging



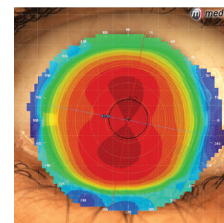
Incredible Depth-of-Field Anterior Imaging and Video



Detailed Fluorescein Lens Fitting Imaging & Video



Limbus to Limbus Topography - Now in Wide-Field Color



see clearly ▶ treat optimally

clarity ▶ convenience ▶ confidence

The **medmont meridia™** Advanced Topographer carries forward our expertise, experience, reliability and first-in-class accuracy with our enhanced applications: full color images for corneal topography, specialty lens fitting, anterior and fluorescein images, and dry eye evaluations.

The **medmont meridia™**, featuring Medmont Studio 7 software, is designed to bring meaningful insights to action personalized patient care and improved workflow.

Topography Simplified

With precision, control and comfort, the **medmont meridia™** platform incorporates an advanced ergonomic design with five quick keys on the instrument, which provide successful outcomes for the clinical professional and the patient. This design, coupled with the software guidance tools, add to an all-in-one platform that encourages workflow and space standardization, thereby maximizing your ROI.

one system ▶ many choices

Complete Your View A versatile range of clinical evaluation choices provides a new level of clarity and visual clinical support, facilitating confidence in your most complex decisions.

Encourages Patient Engagement and Satisfaction

Comprehensive patient information throughout your diagnostic case workflows.

Enlarged Field-of-View Color Topography

Guided and intuitive software interface coupled with the instrument's quick keys are designed to improve workflow and user experience for you and your staff.

Reliable Patient Evaluation

High-resolution imaging enables clinical decision support when you need it most. Reduce uncertainty in evaluations, fittings and treatment plans for all patients.